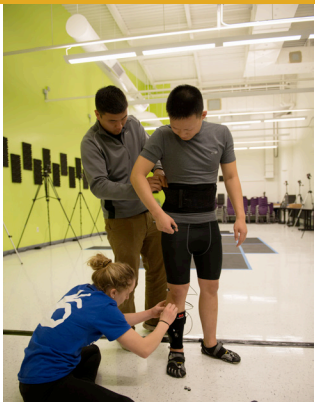


SAN JOSÉ STATE UNIVERSITY  
**DEPARTMENT OF KINESIOLOGY**



### HIGHLIGHTS

- ◇ NSCA Graduate Education Recognition Program (ERP) for strength and conditioning (NSCA)
- ◇ Teacher Education program accredited by the National Council for Accreditation of Teacher Education (NCATE)
- ◇ Distinguished alumni include Super Bowl Champion Coaches Bill Walsh and Dick Vermeil, first female NFL Athletic Trainer Ariko Iso, LPGA Golfer Tracey Hanson, LPGA Hall of Fame Golfer Patty Sheehan, and U.S. Senator Ben Nighthorse Campbell.
- ◇ The Department of Kinesiology at San José State University is proud to have the most comprehensive and robust activity program among California universities. We offer over 60 types and levels of classes on exercise, physical activities, martial arts, dance, aerobics, and sports to meet the needs of nearly 8,000 SJSU students per academic year.

### EXAMPLES OF CAREERS IN KINESIOLOGY

- ◇ Preparation for Physical Therapy, Occupational Therapy, Sports Medicine, Chiropractic, etc.
- ◇ Adapted Physical Activity Specialist
- ◇ Wellness Program Director
- ◇ Physical Education/Adapted Physical Education Teacher
- ◇ Athletic Trainer
- ◇ Personal Trainer
- ◇ Sports Information Director
- ◇ Sport Manager or Administrator
- ◇ Fitness Club Manager
- ◇ Sports Psychologist
- ◇ Strength and Conditioning Coach
- ◇ Athletic Administrator

**Kinesiology** is the discipline related to the scholarly study of sport, exercise, and related activities from anatomical, biomechanical, developmental, physiological, psychological, sociological, philosophical, and historical perspectives.

### PROGRAMS OFFERED

#### Bachelor of Science, Kinesiology,

Specializations in:

- Exercise and Fitness Specialist
- Rehabilitation Science
- Sport Management and Culture
- Inclusive Physical Activity in Communities
- Individualized Studies

#### Bachelor of Science, Kinesiology (Preparation for Teaching)

#### Master of Arts, Kinesiology

Specializations in:

- Exercise Physiology
- Sport Management
- Psychosocial Aspects of Sport and Physical Activity
- General Kinesiology

#### Minor in Kinesiology

\* For supplemental admission criteria, see: [www.sjsu.edu/kinesiology](http://www.sjsu.edu/kinesiology)

### Office Location

Dept. of Kinesiology Main Office: SPX 102

## REQUIRED LOWER DIVISION COURSES

- ◇ GE Area B met by taking
  - Chem 30A, (or higher)
  - Biol 65 (Anatomy)
  - Biol 66 (Physiology)
  - Any B4 math course (STAT 95 Recommended)
- ◇ Kin 70 (Intro to Kinesiology)
- \* Undergraduate internship/clinical experience is required

## LABORATORIES AVAILABLE

- ◇ Exercise Physiology
- ◇ Biomechanics
- ◇ Applied Motor Behavior
- ◇ Adapted Physical Activity
- ◇ Athletic Training
- ◇ Teacher Education
- ◇ Qualitative Research
- ◇ Stress Management
- \* Timpany Center (off campus)
- \* For more information: [www.timpanycenter.org](http://www.timpanycenter.org)

## CLUBS AND ORGANIZATIONS

- ◇ Kinesiology Ambassadors' Club
- ◇ Adapted Physical Activity Club (APA)
- ◇ Pre-Physical Therapy Club
- ◇ Sport Management Student Assoc. (SMSA)
- ◇ Physical Education/Teacher Education (PETE)

## STUDENT SCHOLARSHIPS

- ◇ Mary Bowman Fellowship
- ◇ Joyce Malone Memorial Scholarship
- ◇ Clyde A. Burch Memorial Scholarship (for PT)
- ◇ David Furst Scholarship (Graduate Sport Studies)
- ◇ Cathy Buell Scholarship for P.E. Credential Candidates
- ◇ Steven H. and Bobby J. Jensen Living Trust Scholarship (Graduate and Undergraduate; for scholarly research)

## SOCIAL MEDIA

**Blog:** <http://blogs.sjsu.edu/kinesiology/>  
**Facebook:** <http://www.facebook.com/KinSjsu>  
**Twitter:** <https://twitter.com/KinSJSU>

## SJSU WEB LINKS

**SJSU Home page:** <http://www.sjsu.edu/>  
**Applying to SJSU:** <https://www.calstate.edu/apply>  
**Aid and Scholarship:** <http://www.sjsu.edu/faso>  
**Housing:** <http://housing.sjsu.edu/>  
**Request Information about SJSU:** <https://www.sjsu.edu/soar/>  
**Schedule of Classes:** <https://www.sjsu.edu/classes/>  
**SJSU Catalog:** <https://catalog.sjsu.edu/>  
**Writing Skills Test:** <https://www.sjsu.edu/testing/>  
**Accessible Education Center:** <http://www.sjsu.edu/aec/>

## ACADEMIC UNIT

One Washington Square, San José, CA 95192  
 Office: SPX 102

Phone: (408) 924-3010

Fax: (408) 924-3053

Web: [www.sjsu.edu/kinesiology](http://www.sjsu.edu/kinesiology)

## CONTACTS

**Department Chair:**

**Dr. Tamar Semerjian**  
 408-924-3069 / [tamar.semerjian@sjsu.edu](mailto:tamar.semerjian@sjsu.edu)

**Department Associate Chair:**

**Dr. Michael Dao**  
 408-924-2904 / [michael.dao@sjsu.edu](mailto:michael.dao@sjsu.edu)

**Undergraduate Advising Manager:**

**Daniel Bohigian**  
 408-924-3027 / [daniel.bohigian@sjsu.edu](mailto:daniel.bohigian@sjsu.edu)

**Undergraduate Coordinator:**

**Dr. Jessica Chin**  
 408-924-3039 / [jessica.chin@sjsu.edu](mailto:jessica.chin@sjsu.edu)

**Graduate Coordinator:**

**Dr. Cole Armstrong**  
 408-924-8932 / [cole.armstrong@sjsu.edu](mailto:cole.armstrong@sjsu.edu)